

EVENTS GUIDE

CORPORATE EVENTS & LAUNCHES



Victoria
Yards





CREATE

Need to take your corporate event game to the NEXT LEVEL - well you've come to the right place. Once a derelict complex of light industrial buildings, this sprawling site in Lorentzville in eastern Joburg has undergone a spectacular re-imagining. Underlying this development was the vision for a complex of makers, artists and artisans, that has infused new life into this downtrodden neighborhood that lies between the downtown Maboneng Precinct and Cyrildene's colourful Chinatown. We now offer you a unique blank canvas of vintage industrial buildings and warehouses to host intimate or large events from 30pax to 3000 pax. Whatever you can imagine we can create!



CONFERENCE FACILITIES

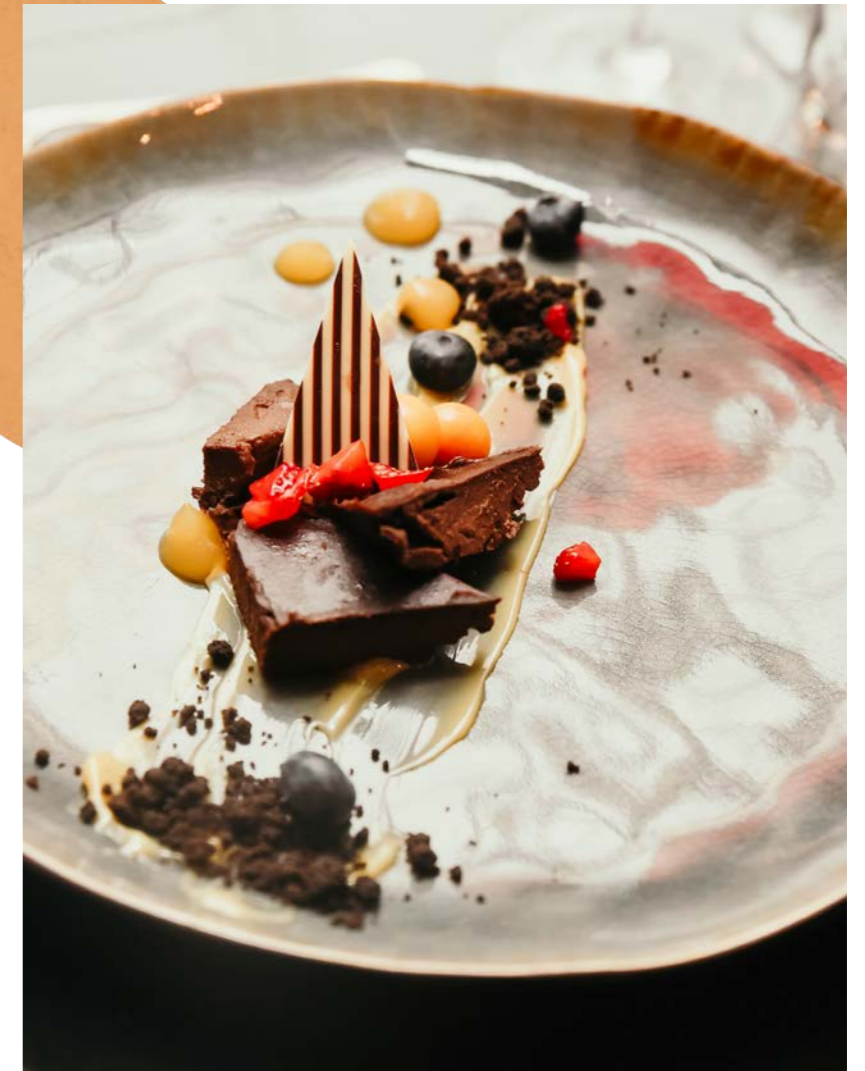
The large main event warehouse is perfectly suited for summer and winter conferences. Perfectly combining lounge and theatre seating.



AWARDS & CELEBRATIONS

Bespoke dining within a beautiful garden setting will set the tone for any celebration.





PRESENT IN STYLE

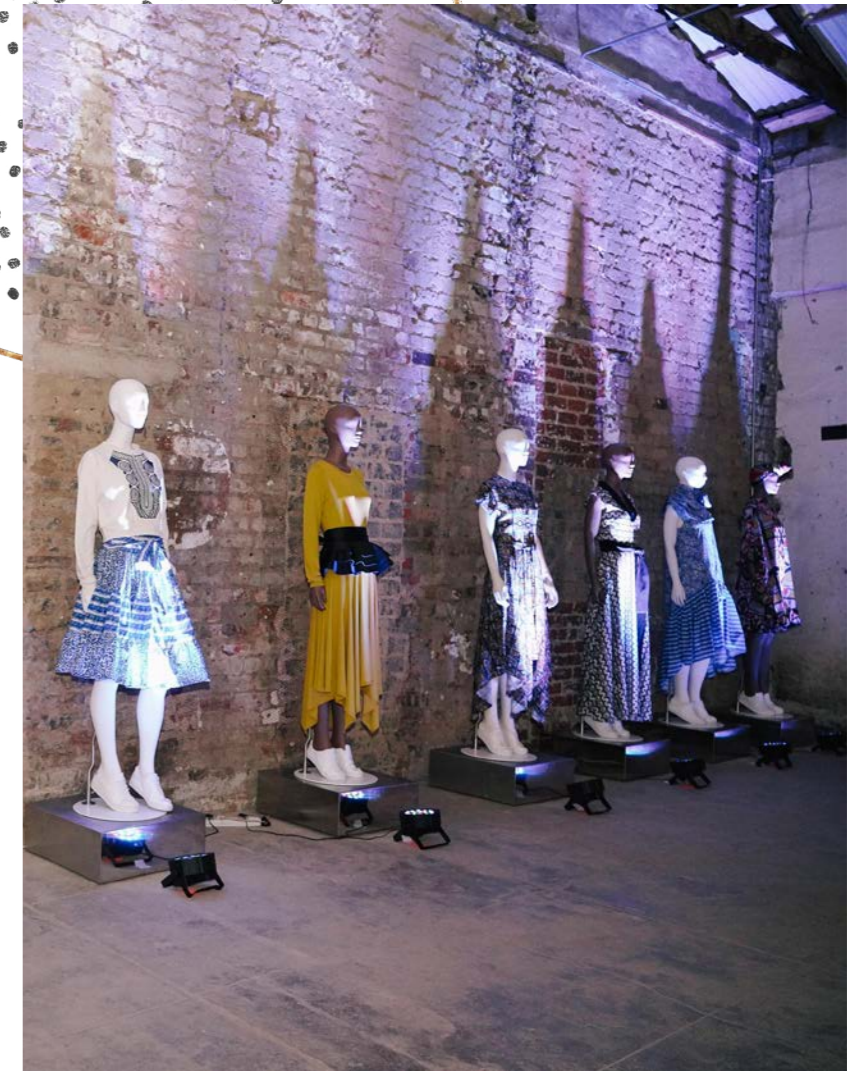
Flow from the fireplace room into the large warehouse and down into the tiered gardens. At Victoria Yards the spaces gives you the freedom to surprise and delight. What are you waiting for - let's create your presentation space. We can even supply break away rooms and bespoke creative activities as part of the package.



A TASTE FOR SUNSHINE

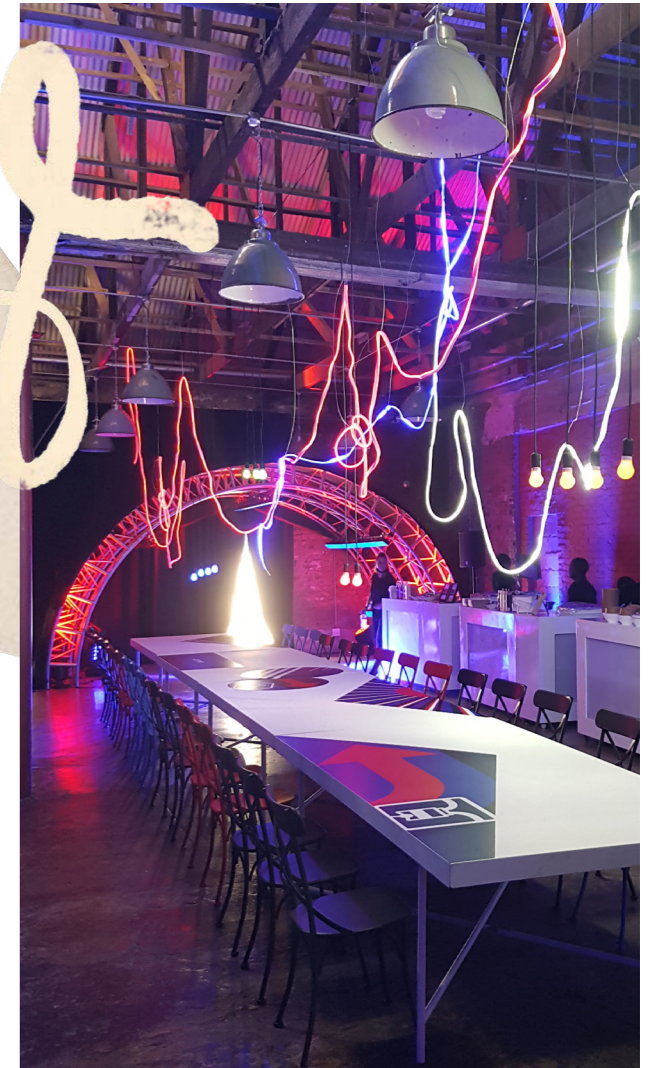
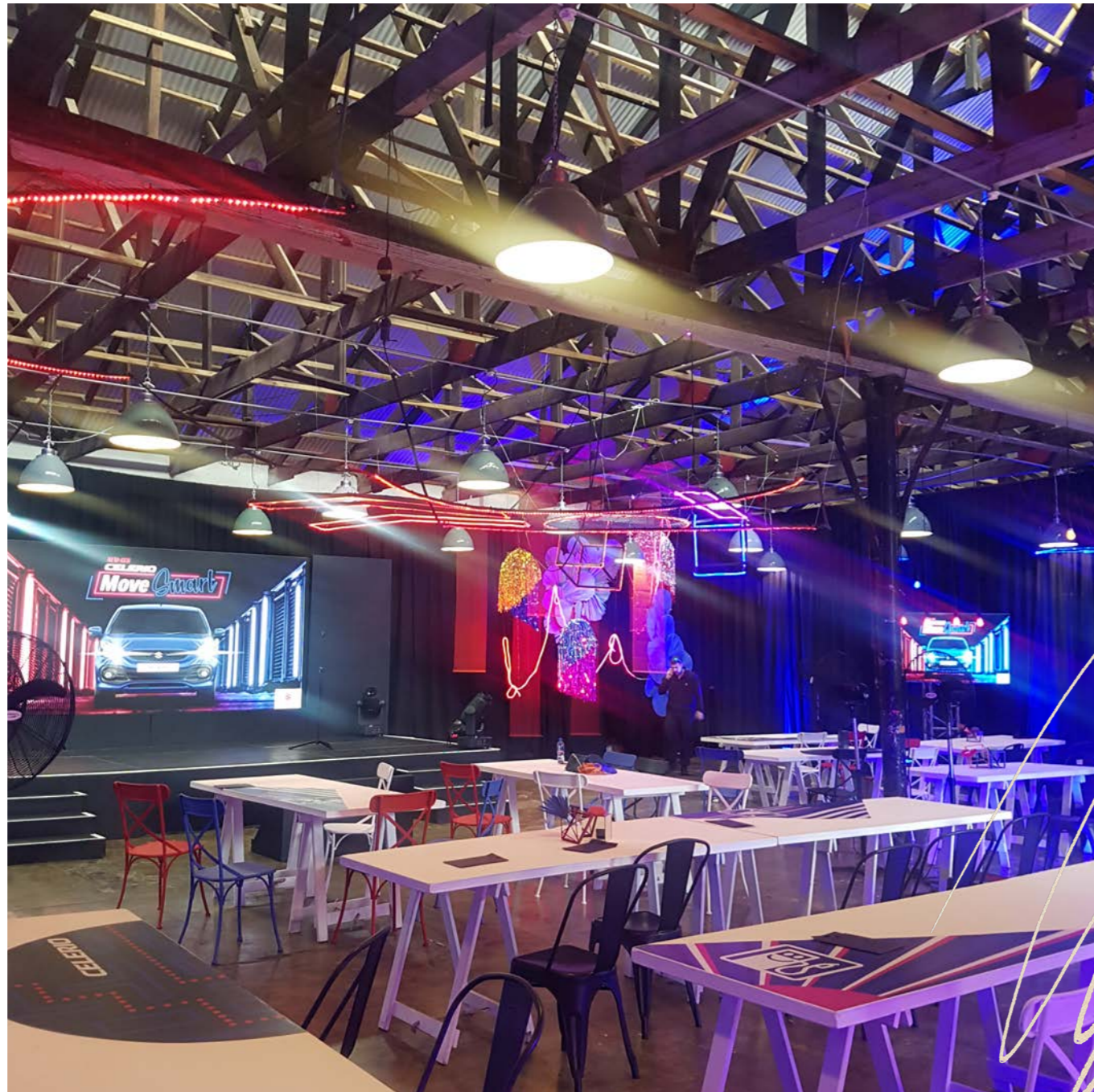
Umbrellas, marque tents, beautiful gardens, sunshine and fresh air...take your event to an outdoor space that's safe, secure and unique in every way!





LIGHTS CAMERA ACTION

Showcase your new product! Our unique display areas and industrial vintage walls and windows creates an interesting mood for photoshoots and video productions alike.




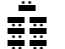






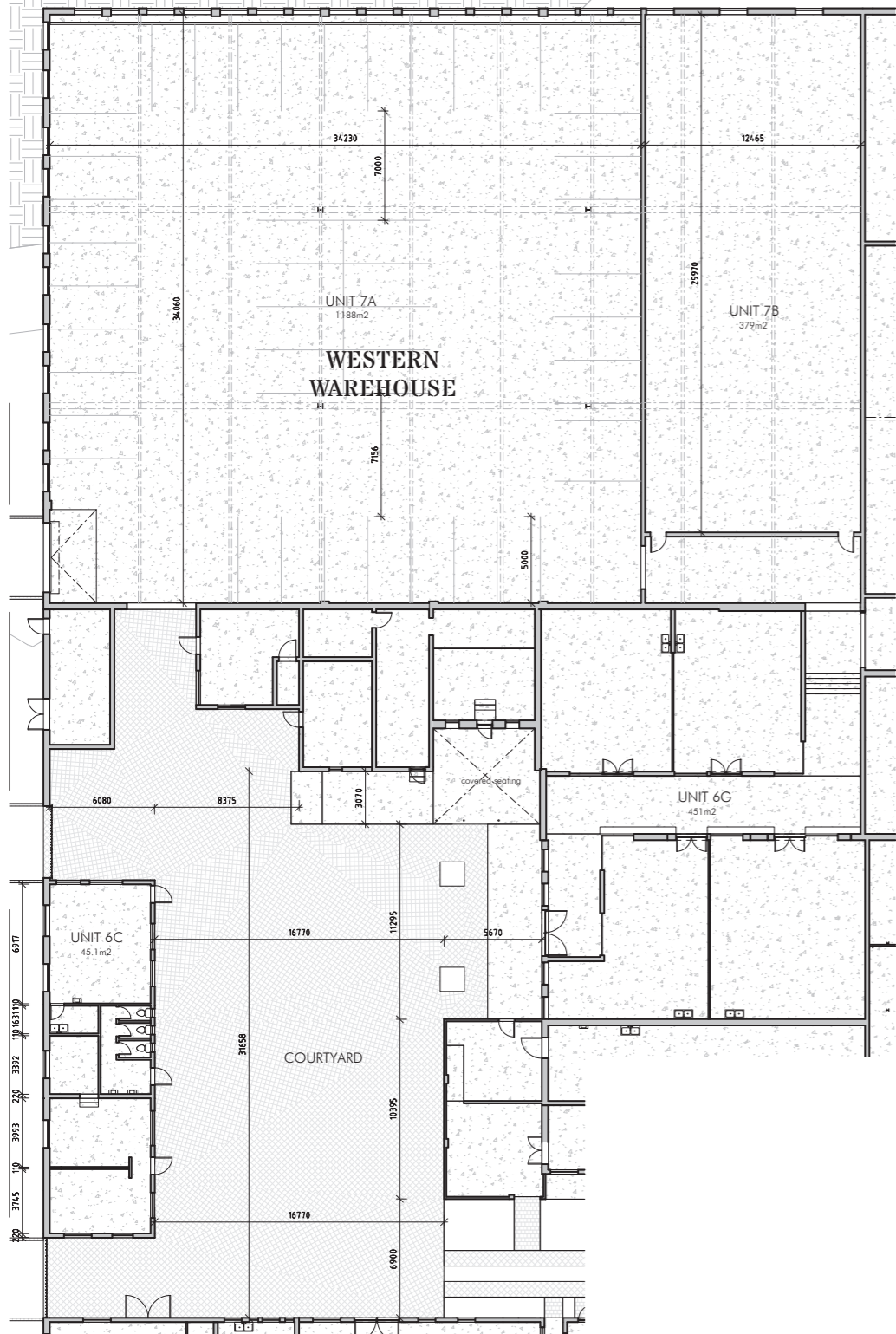
CAR LAUNCH

Our large warehouse spaces has proven to be extremely convenient and dramatic. Launch your new model at our urban hub.



CLASSROOM STYE DEMO

	FIREPLACE ROOM	MAIN EVENT WAREHOUSE	BALLEN WAREHOUSE	TIERED GARDENS	WESTERN WAREHOUSE +COURTYARD
 BANQUET	50	PAX 400	PAX 150	PAX NA	PAX NA
 RECEPTION	200	1000	500	300	600
 THEATER	100	700	300	200	300
 CLASSROOM	70	600	200	NA	NA
 BOARDROOM	40	NA	100	NA	NA
 U-SHAPE	50	NA	100	NA	NA
 CABARET	30	200	100	NA	NA
 SQUARE	NA	NA	NA	NA	NA



WHY VICTORIA YARDS

Proven event space since 2018

Unique inner city vibes
(physically & energetically)

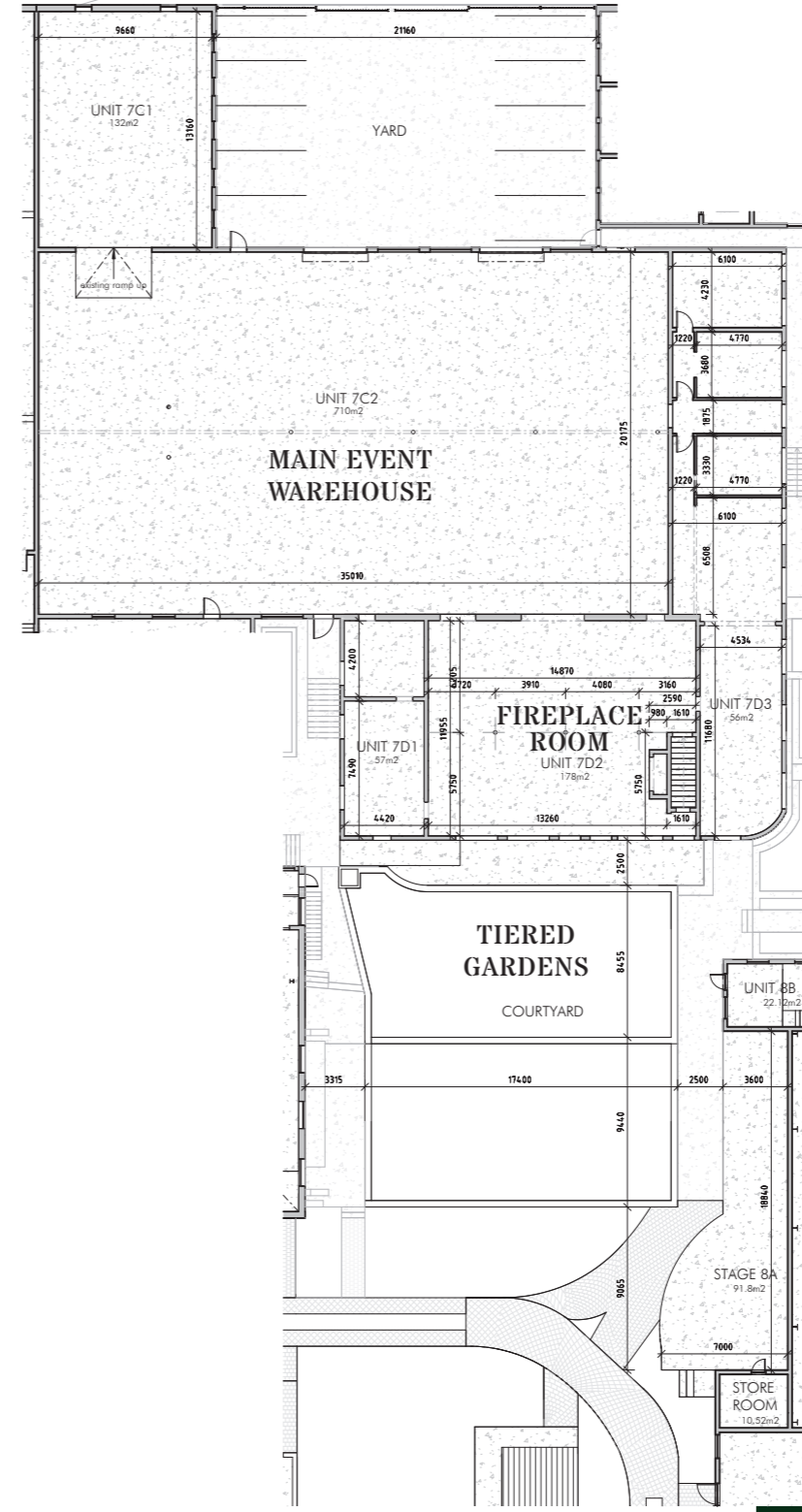
Outdoor and indoor spaces in
one setting

Intimate (minimum of 30 pax)
to large events of 5 000

Safe secure parking

Secure complex

We can do everything and
nothing (catering, technical,
branding, entertainment, bar
services, décor, and more)




Victoria
Yards



For viewings, quotes or a quick drink and introduction,

contact **MIKE WALKER**

 083 629 6892

 mike@sl8.co.za

(
)
SL8